

Oweninny Power Limited
Stephen Court
18/21 St Stephens Green
Dublin 2

Our Ref - SM/Oweninny

26 March 2013

Re: Planning Application by Oweninny Power Limited (OPL) for a Windfarm Development at Oweninny in Co Mayo for 112 wind turbines and associated works for the development of a wind farm

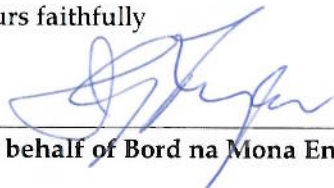
To Whom it Concerns

Bord na Móna and its subsidiaries are registered owner of the lands delineated in red on the map attached hereto (the Site).

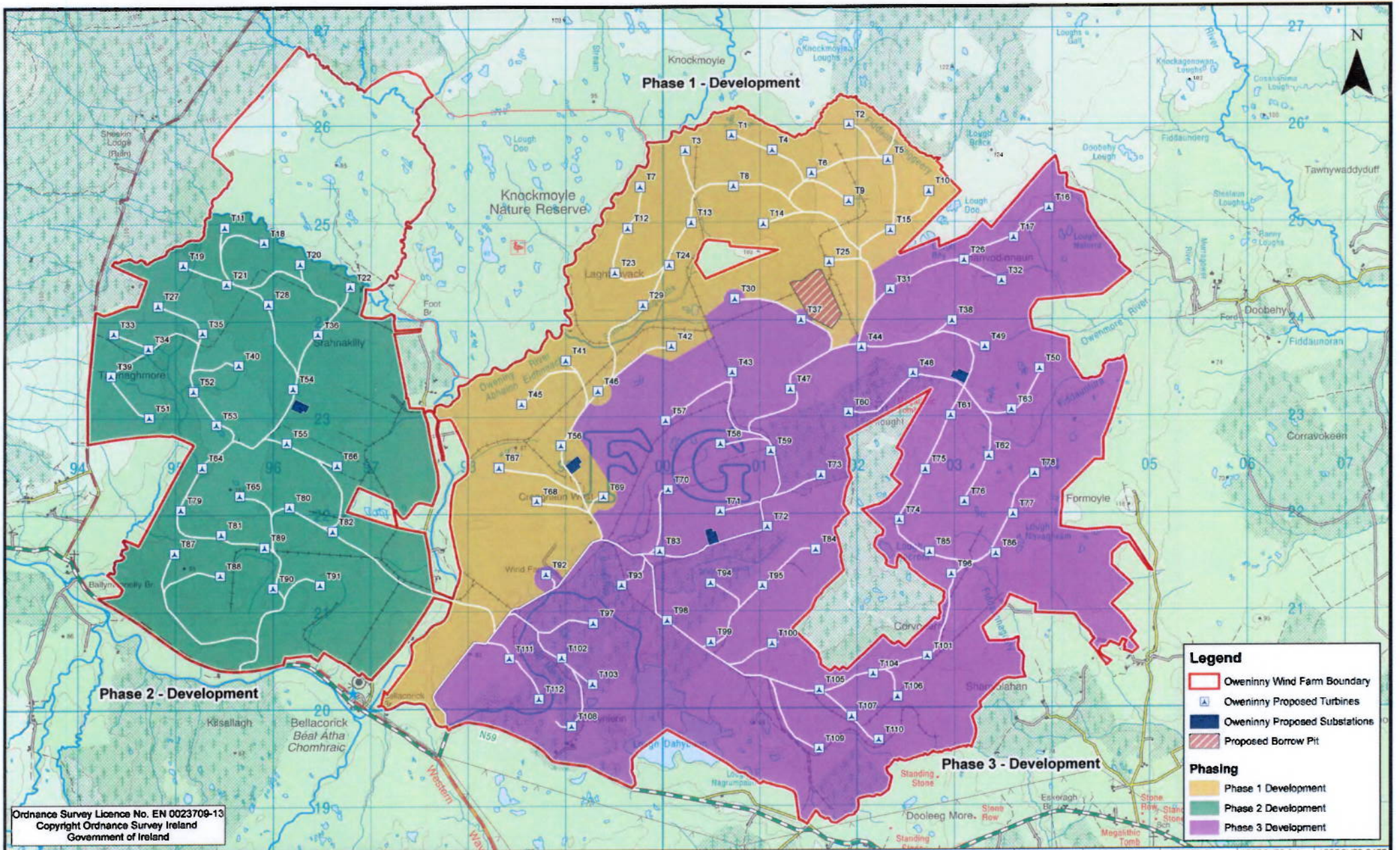
We are aware of OPL's planning application in relation to the proposed wind farm at Oweninny, County Mayo for 112 wind turbines and associated works for the development of a wind farm (the Application).

We confirm we have no objection to the Application being submitted and are aware that it relates to the Site.

Yours faithfully



On behalf of Bord na Mona Energy Limited



COPYRIGHT © ESB ENGINEERING & FACILITY MANAGEMENT LIMITED.
All rights reserved. No part of this work may be modified or reproduced or copied in any form or by any means - graphics, electronic or mechanical, including photocopying, recording, taping or information-and-retrieval system, or used for any purpose than its designated purpose, without the written permission of ESB Engineering & Facility Management Ltd.

ESB International

ESB International, Stephen Court, 11-21 St. Stephen's Green, Dublin 2, Ireland. Tel: +353 (0) 1 703 8000 Fax: +353 (0) 1 703 8088
Email: esp@esb.ie Web: www.esb.ie

ESB International is a trading name of ESB Engineering & Facility Management Limited. Registered Office: as above. Registered in Ireland No. 113,749

Client Oweninny Power Ltd.
Project Windfarm at Oweninny, Co. Mayo

Title Development Phasing
Production Unit Civil, Building & Environment Group

DRAWN BY C.Fearn	PRODUCED BY CBE	VERIFIED BY P.Kavanagh	APPROVED BY P.Kavanagh	APPROVED DATE 04/12/2012
CLIENT REF.	NO. OF SHEETS 1 of 1	SHEET SIZE A3	SCALE 1:35,000	
MAP REFERENCE Figure 7				